

Parts in the box		
Adjustable Bottom Strike	Top Strike	Latches
<p>A B C</p>	<p>D E F</p> <p>46780</p>	<p>G H J K</p> <p>03809</p>

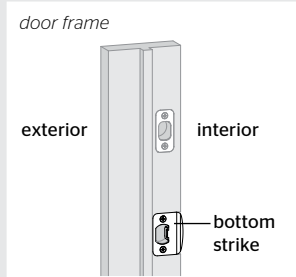
1 Adjust (or replace) your bottom strike

A Stand inside and close your door. Manually lock your deadbolt.

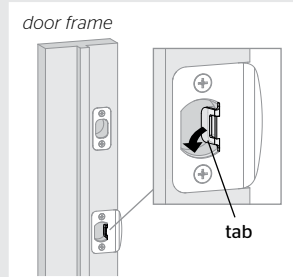
If you have to **PULL** the door closer to you to lock it:

If you have to **PUSH** the door away from you to lock it:

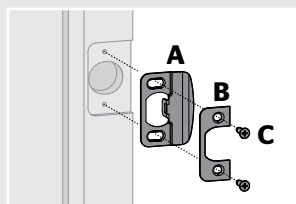
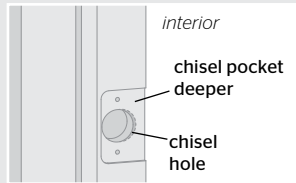
Your bottom strike may be installed too close to the exterior. Remove your bottom strike and replace it with the adjustable bottom strike in the kit.



Use a screwdriver to bend the tab on your bottom strike in towards the center of the hole. This will allow the strike to better grip your bottom latch.



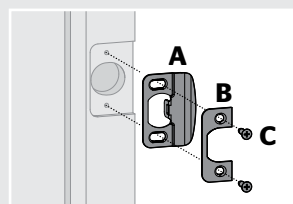
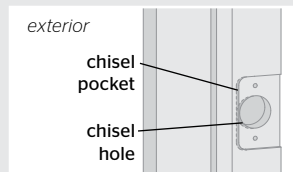
Position the new bottom strike closer to the interior. You may need to chisel out your strike hole and pocket so that the new strike will sit flush.



See additional details in the supplied "Adjustable Strike Installation Guide."

If your bottom strike does not have a tab, remove your bottom strike and replace it with the adjustable bottom strike in the kit.

You may need to position the strike slightly closer to the exterior than your previous strike. If needed, chisel out your strike hole and pocket so that the new strike will sit flush.



See additional details in the supplied "Adjustable Strike Installation Guide."

B Stand inside again and close your door. Manually lock your deadbolt **without applying force** to push or pull the door.

If the door locks smoothly, you may stop here. No additional steps are required.

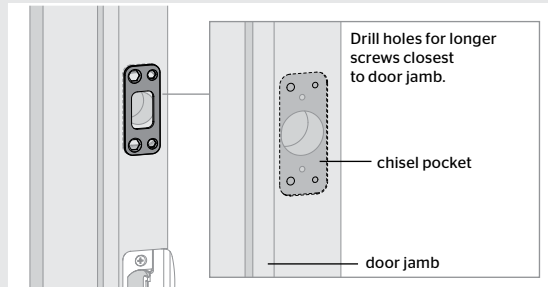
If the door does not lock smoothly, continue to step 2.

2 Replace your top strike

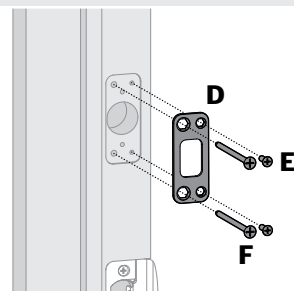
A Remove your existing top strike and replace it with the parts in the kit.

Hold the new strike against the door frame over the existing pocket, and trace around the edge. Chisel out your strike pocket so that the new strike will sit flush, and drill pilot holes for the new screws.

You may need to chisel out the strike hole so it aligns better with the center of the latch bolt.



Install the top strike with longer screws closest to the door jamb.



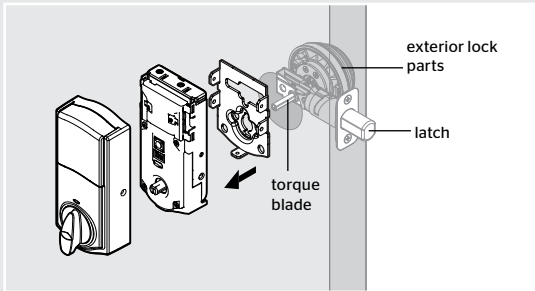
B Stand inside again and close your door. Manually lock your deadbolt **without applying force** to push or pull the door.

If the door locks smoothly, you may stop here. No additional steps are required.

If the door does not lock smoothly, continue to step 3.

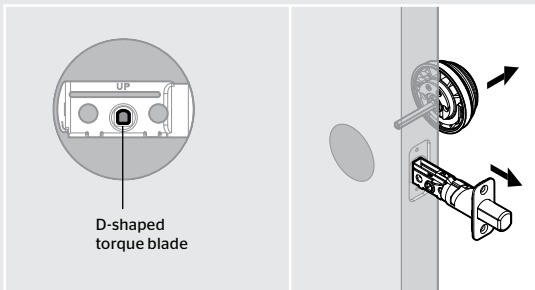
3 Determine if your latch can be replaced

- A** Remove the interior lock parts from your door. Keep the exterior lock parts and latch in place.



- B** Look at your torque blade (the part sticking out through the latch).

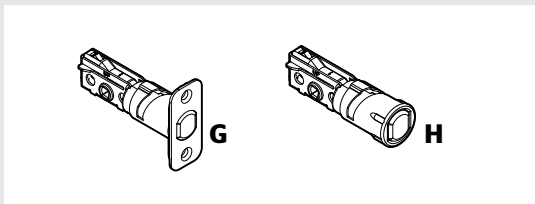
If your torque blade is D-shaped, remove your exterior lock parts and latch. Continue to step 4.



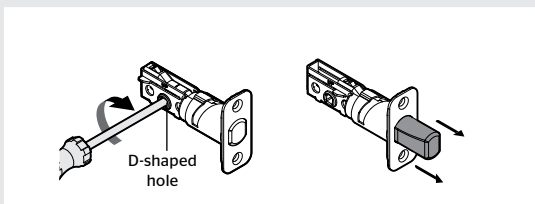
If your torque blade is another shape, the supplied latches will not work with your lock. Reinstall the interior parts on your door according to your lock's installation instructions, and stop here.

4 Choose your latch and extend your latch bolt

- A** If your existing latch has a rectangular face, use latch "G."
If your existing latch does not have a rectangular face, use latch "H."

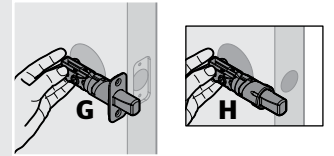


- B** Insert a screwdriver into the D-shaped hole of your selected latch, and rotate to extend the latch bolt.



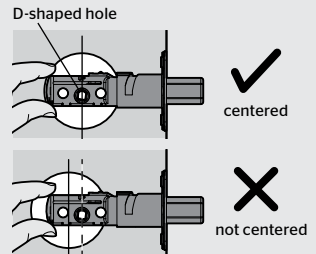
5 Adjust the backset of the latch (if needed)

- A** Hold the latch in front of the door hole, with the latch face flush against the door edge.

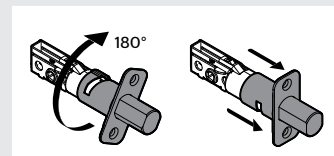


- B** If the D-shaped hole is centered in the door hole, no adjustment is required. Proceed to step 6.

If the D-shaped hole is NOT centered, adjust the latch. See "Latch Adjustment" (step 5C).



- C** Latch Adjustment (only if needed):
Rotate the front of the latch to extend it.

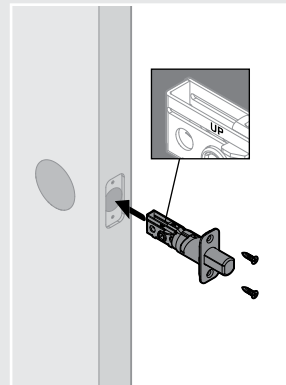


6 Install your latch

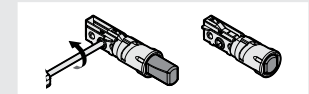
Latch "G"

Latch "H"

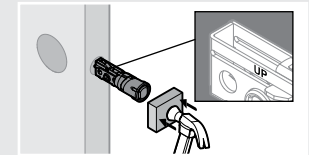
Install the latch so that "UP" is on top.



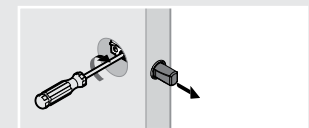
Retract the latch bolt.



Use a hammer and wood block to tap the lock into position, making sure "UP" is on top.



Extend the latch bolt.



7 Test your deadbolt

Reinstall your exterior and interior lock parts according to your lock's installation instructions.

Stand inside again and close your door. Manually lock your deadbolt **without applying force** to push or pull the door.

If the door locks smoothly, you may stop here. No additional steps are required.

If the door does not lock smoothly, please call Customer Support.